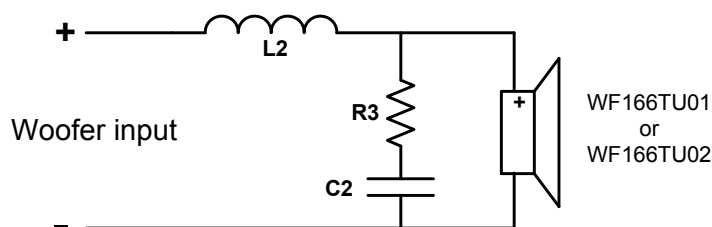
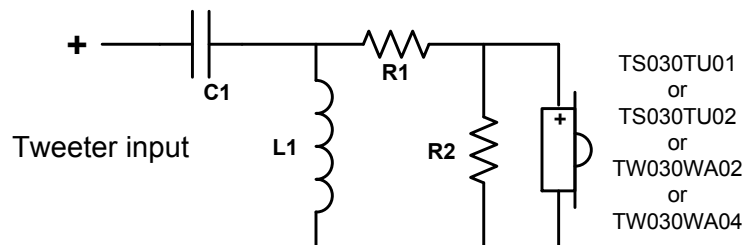


# WF166TU02 or WF166TU01 & TS030TU01 or TS030TU02 or TW030WA02 or TW030WA04



## Crossover BOM

<u>Component</u>	<u>Value</u>	<u>Description</u>	<u>Tolerance</u>
R1	2.2 Ohm / 5 W	Power resistor, wire wound, non-inductive	±5%
R2	15 Ohm / 5 W	Power resistor, wire wound, non-inductive	±5%
R3	2.7 Ohm / 10 W	Power resistor	±5%
C1	8.2 uF / 160 V	Metalized polypropylene capacitor, best quality	±5%
C2	15 uF / 160 V	Metalized polypropylene capacitor, best quality	±5%
L1	0.27 mH / 1.0 Ohm	Air core inductor	±5%
L2	0.47 mH / 0.25 Ohm	Air core inductor	±5%

### Notes

**IMPORTANT!**

All inductors must have all windings bonded together by dipping the inductors into a lacquer that dries up and becomes hard and firmly keeps all windings in fixed positions and together as one unit.



	Name	Signature	Date	Part no.	
Drawn					
Approved				Description	Revision
ECO					

**Legal notice:** This document is the property of Wavecor Ltd., Guangzhou, China. Copyright © by Wavecor Ltd. Copying or distributing to any third parties is prohibited without prior written permission from Wavecor Ltd.

**RoHS Directive compliance:** This product may not contain any lead, mercury, cadmium, hexavalent chromium, polybrominated biphenyls (PBBs) or polybrominated diphenyl ethers (PBDEs).